

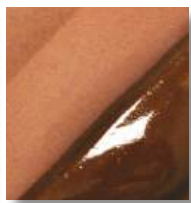
LEAD FREE "V" Velvet Underglazes for Bisque, Greenware and Wet Clay

Cone 05

The Art & Creative Materials Institute AP (Approved Product) seal certifies this product to be safe for use by all ages.



V-301
Ivory Beige



V-303
Terra Cotta



V-304
Straw



V-308
Yellow



V-309
Deep Yellow



V-311
Nectar



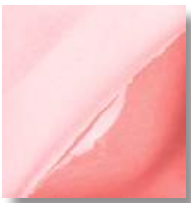
V-313
Red Brown



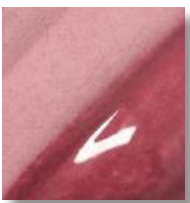
V-314
Chocolate Brown



V-315
Peach



V-317
Coral



V-318
Rose



V-320
Lavender



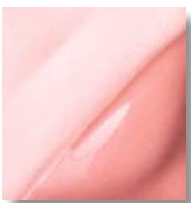
V-321
Lilac



V-322
Purple



V-323
Salmon



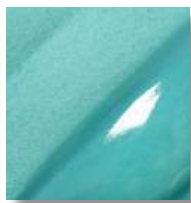
V-324
Blush



V-325
Baby Blue



V-326
Medium Blue



V-327
Turquoise Blue



V-328
Iceberg Blue



V-329
Sea Glass



V-330
Indigo



V-332
Teal Blue



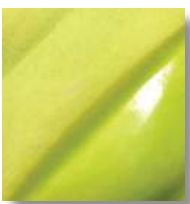
V-333
Avocado



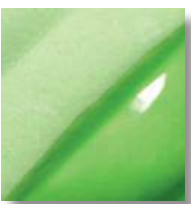
V-336
Royal Blue



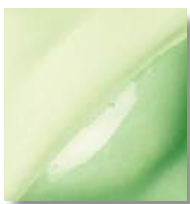
V-341
Blue Green



V-343
Chartreuse



V-345
Light Green



V-347
Pistachio



V-349
Cactus



V-350
Orange



V-353
Dark Green



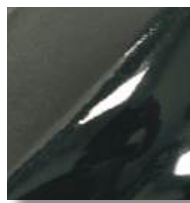
V-356
Pearl Gray



V-359
Ultra White



V-360
White



V-361
Jet Black



V-362
Ultra Black



V-363
Morning Fog



V-364
Elephant



V-365
Slate



V-366
Teddy Bear Brown



V-370
Velour Black



V-375
Maroon



V-376
Hunter Green



V-379
Ultra Violet



V-380
Violet



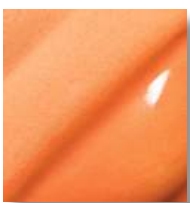
V-381
Amethyst



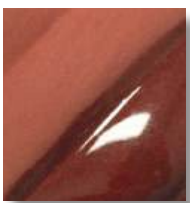
V-382
Red



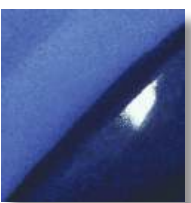
V-383
Light Red



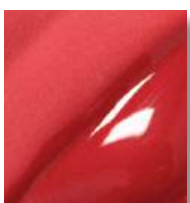
V-384
Real Orange



V-385
Cinnamon



V-386
Electric Blue



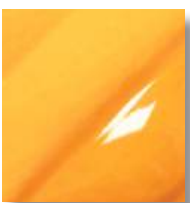
V-387
Bright Red



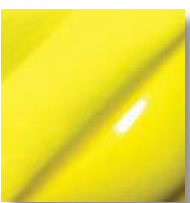
V-388
Radiant Red



V-389
Flame Orange



V-390
Bright Orange



V-391
Intense Yellow



V-392
Blood Orange

All colors are opaque

☞ AP colors are safe for spray application

☞ All colors are Food Safe*

*Approved when applied and fired under AMACO® LG-10 or HF-10 Clear Glaze

Velvet Underglazes color chips shown fired at Cone 05 on AMACO® 25-M White Clay bisque buttons. One half of each button is shown with LG-10 Clear Transparent Glaze.

LEAD FREE "V" Velvet Underglazes for Bisque, Greenware and Wet Clay

Shown Fired to Cone 5

The Art & Creative Materials Institute AP (Approved Product) seal certifies this product to be safe for use by all ages.



V-301
Ivory Beige



V-303
Terra Cotta



V-304
Straw



V-308
Yellow



V-309
Deep Yellow



V-311
Nectar



V-313
Red Brown



V-314
Chocolate Brown



V-315
Peach



V-317
Coral



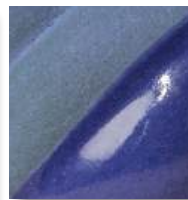
V-318
Rose



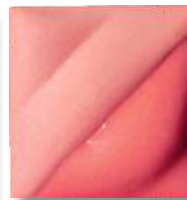
V-320
Lavender



V-321
Lilac



V-322
Purple



V-323
Salmon



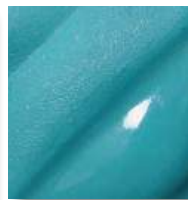
V-324
Blush



V-325
Baby Blue



V-326
Medium Blue



V-327
Turquoise Blue



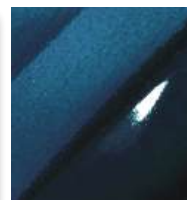
V-328
Iceberg Blue



V-329
Sea Glass



V-330
Indigo



V-332
Teal Blue



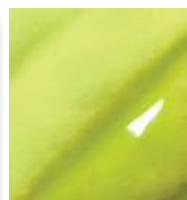
V-333
Avocado



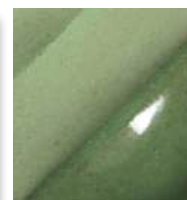
V-336
Royal Blue



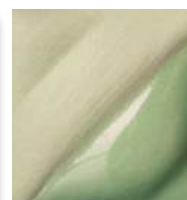
V-341
Blue Green



V-343
Chartreuse



V-345
Light Green



V-347
Pistachio



V-349
Cactus



V-350
Orange



V-353
Dark Green



V-356
Pearl Gray



V-359
Ultra White



V-360
White



V-361
Jet Black



V-362
Ultra Black



V-363
Morning Fog



V-364
Elephant



V-365
Slate



V-366
Teddy Bear Brown



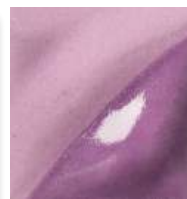
V-370
Velour Black



V-375
Maroon



V-376
Hunter Green



V-379
Ultra Violet



V-380
Violet



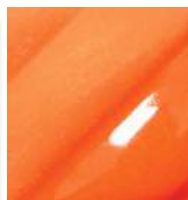
V-381
Amethyst



V-382
Red



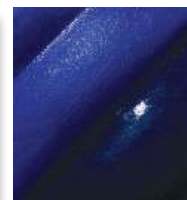
V-383
Light Red



V-384
Real Orange



V-385
Cinnamon



V-386
Electric Blue



V-387
Bright Red



V-388
Radiant Red



V-389
Flame Orange



V-390
Bright Orange



V-391
Intense Yellow



V-392
Blood Orange

All colors are opaque

☺ AP colors are safe for spray application

Velvet Underglazes color chips shown fired at Cone 5 on AMACO® 38-M White Stoneware Clay bisque buttons.
One half of each button is shown with HF-9 Zinc-Free Clear Glaze.

LEAD FREE "V" Velvet Underglazes for Bisque, Greenware and Wet Clay

Shown Fired to Cone 10

The Art & Creative Materials Institute AP (Approved Product) seal certifies this product to be safe for use by all ages.



All colors are opaque

☞ AP colors are safe for spray application

Velvet Underglazes color chips shown fired at Cone 10 on AMACO® 38-M White Stoneware Clay bisque buttons. One half of each button is shown with HF-9 Zinc-Free Clear Glaze.